



## USER MANUAL

SPRAY GUN CLEANERS - WATER BASED PAINTS

UG7500W

### CAUTION

FOR WATER BORNE PAINTS ONLY

THIS UNIT IS NOT DESIGNED  
FOR USE WITH SOLVENT BASED PAINT



UNI-RAM CORPORATION • ONTARIO • CANADA

REV 2023-03

## INTRODUCTION

Uni-ram holds many patents on designs used in its innovative products. Every machine is tested for compliance with Quality Assurance standards. Follow the directions in this manual under Setup, Operation and Maintenance in order to operate this machine safely and effectively. Not following these instruction can lead to malfunction or damage to the machine. Ensure that the manual is readily available for the operator at all times. If you have any questions about the operation of this machine, call your distributor or a Uni-Ram Service Engineer.

North America: Uni-ram Technical Service

1-800-417- 9133

Other Continents: Contact Your Supplier

## SETUP

### DELIVERY INSPECTION

- Inspect the shipping carton for any sign of transport damage. Carefully remove the unit from the shipping carton and check the unit for damage. Report any transport damage immediately to the carrier and your vendor. Initiate a freight claim with the carrier. The manufacturer is not responsible for freight damage.
- Check for the parts listed below. If any are missing, contact your supplier.

Qty	Included Parts	Part Number
1	MANUAL	
1	NOZZLE EXTENSION (INSTALLED IN AUTO WASH TANK)	780-3530
1	PUSH-ON NOZZLE EXTENSION, LARGER TIP, 3 HOLES	110-430PPS
1	PUSH-ON NOZZLE EXTENSION, SMALLER TIP	110-430
1	QUICK COUPLER (INSTALL ON RIGHT SIDE OF UNIT)	102-3990
1	HOOD DOOR SUPPORT	780-3723
1	TRIGGER CLAMP & PLUG KIT, SET OF 2	140-2340
2	AQUA-KLEEN PGC CLEANER	102-8200
1	AIR BLOW GUN (INSTALL ON RIGHT SIDE OF UNIT)	102-7010
1	COAG-KLEEN FLOCCULANT, 2KG	102-8300

### SELECTION OF NOZZLE EXTENSION

780-3530	INSTALLED. HOLES PROVIDE SOLVENT TO CEAN DISPOSABLE CUP ADAPTOR. CANNOT BE USED FOR CONVENTIONAL SYSTEMS.
110-430PPS	HOLES PROVIDE SOLVENT TO CLEAN DISPOSABLE CUP ADAPTOR. MAY ALSO BE USED FOR CONVENTIONAL SYSTEMS WITH LARGER OPENINGS IN NECK OF CUP.
110-430	FOR CONVENTIONAL SYSTEMS ONLY WITH SMALLER OPENINGS IN NECK OF CUP.

### LEVELING AND AIR SUPPLY

- Level the machine using the adjustable legs.
- Attach an air plug (not supplied) to the Air Inlet.

The air supply pressure must be at least 85 PSI and the air must be free from contaminants such as water, dust, rust, tar, grease etc.

To prevent damage to the Diaphragm Pump an internal Air Pressure Regulator has been installed to limit the air pressure to precisely 85 PSI. Do not install a second air pressure regulator or use a pressure set below 85 PSI.

## PAIL SETUP

Remove the door of the base cabinet.

### WASH PAIL (LEFT):

- Make sure the Drain is closed (valve handle horizontal).
- Disconnect the Suction Pipe from the Drain Valve by pressing the grey button and then move the wash pail and pipe outside the unit.
- Pour AquaKleen PGC into the wash pail. Add water as per the instructions on the container. Insert the suction pipe and tube for the brush into the container and return the pail to the left side of unit. Re-connect the suction pipe to the Drain Valve and open the Drain (valve handle vertical).

### CLEAN PAIL (RIGHT):

- For Model UG7500W, remove the right pail (Clean Rinse) and fill with water. Insert the tube for the Manual Wash Nozzle and Flow-through Brush into the pail. Insert the drain hose. Move the pail into the cabinet.
- For Model UG7500WT, there are 2 pails on the right. Remove them, fill the round pail with water and insert the tube for the Manual Wash Nozzle and Flow-through Brush into the round pail. Insert the drain hose into the rectangular pail.
- For Model UG7500WF, the right-hand pail is used for manual cleaning and water treatment by flocculation. Close the Drain of the flocculation tank (valve handle horizontal) and move the filter-pail assembly outside the unit. Fill the pail to the bottom of the Filter Holder and add a full bottle of Aqua Kleen. Return the filter-pail assembly to the unit. Leave the Drain closed.

## WASH NOZZLES

A PPS-type nozzle is installed inside the tank for spray guns using a disposable cup system such as the PPS system. See photo below. If you are using a non-disposable cup system, place one of the included push-on nozzle extensions



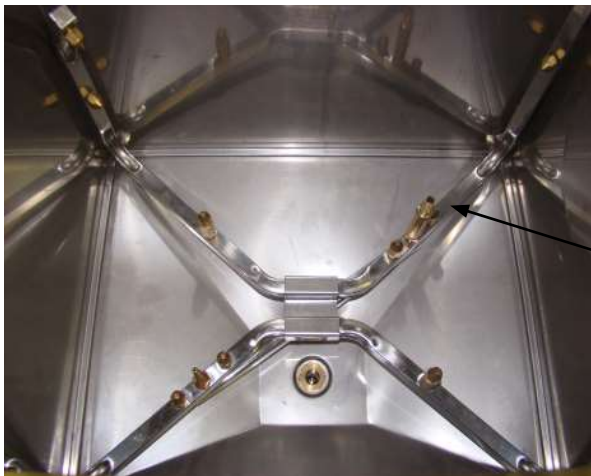
UG7500W



UG7500WT



UG7500WF



Installed  
PPS-type  
Nozzle  
Extension

over the other nozzle (the opening in the neck of the cup will determine which extension should be used). This arrangement will accommodate cleaning the spray gun while it is attached to the cup.

## OPERATION

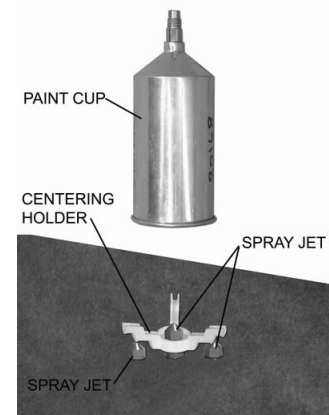
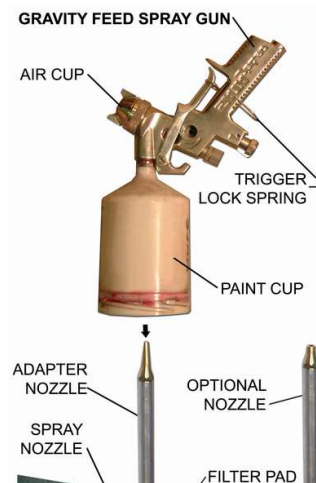
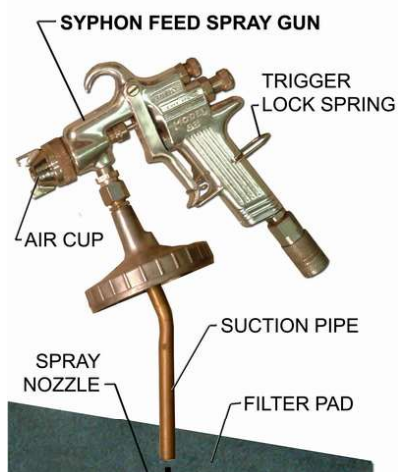
### PREPARATION

For conventional cup systems (skip this step if you use a disposable cup system):

- Disconnect the spray gun from the air hose. Pour paint from the cup (when present) into a 5 gallon pail (not supplied).
- Rinse cup with water and pour into the same 5 gallon pail for later disposal or recycling.

### PREPARE SPRAY GUNS FOR AUTO WASH

- Use the flow-through brush to clean the outside of the gun. Make sure the flow selector lever (blue handle) is in the vertical position, then step on the right-hand foot pedal to start the flow of water.
- Connect the Gun to the Quick Coupler to send air into the air passage to keep water out and speed cleaning.



- Clean the paint channel using the Nozzle. Make sure the flow selector lever (blue handle) is in the horizontal position. Then hold the gun up to the Nozzle so that the nozzle fits tightly into the opening of the paint channel. Step on the right foot pedal to start the flow of water.

## AUTO WASH SPRAY GUNS

- Disconnect the Gun from the Coupler.
- Loosen the air cap of the spray gun two full turns. Orient the ears in a horizontal position.
- Lock the trigger in the open position with the Trigger Clamp.
- To prevent liquid from entering the air passgae during automatic cleaning, insert the white plastic Air Passage Plug into the Spray Gun's air inlet. If the air inlet has a male threaded connector instead of a quick connect use the knurled nut attached to the Trigger Clamp (included). Positive air pressure is applied to the air passage during automatic cleaning.
- Place the gun with cup (if present) in the automatic cleaning tank. Close the lid and turn the "Auto Wash Timer" knob clockwise to start cleaning. Cleaning times are shown on the Timer label. Turn the timer to 5 minutes. If you find that you do not require 5 minutes to clean your spray gun adjust the time accordingly.
- Step on the air rinse pedal for about 3-5 seconds to air-rinse the guns.



## DRY WITH AIR

Re-connect the Gun to the Coupler and squeeze the trigger to send air through the paint channel to dry the paint channel and to check that the gun is clean. Use the Air Blow Gun to dry the outside of the gun.

## WATER TREATMENT BY FLOCCULATION (UG7500WF)

When the right pail is empty, the flocculation reservoir will be full of dirty water accumulated during manual cleaning. This water needs to be treated by flocculation before re-using. **IMPORTANT:** At this time, the water in the left pail (used for auto cleaning) should also be treated. If the water on the auto side is left untreated too long, it will be too dirty for the flocculation process to work properly. The water in the left pail must be transferred into the flocculation reservoir on the right for flocculation, as discussed below.

## FLOCCULATION PROCEDURES (UG7500WF)

### RIGHT SIDE (MANUAL CLEANING)

The dirty water from the right pail accumulates in the flocculation reservoir during use. When the pail is empty follow these steps to treat the water for re-use:

- Remove the Work Screen and the side rails. Sprinkle 2 full scoops\* of the flocculant, COAG-KLEEN, evenly over the dirty water. Close the lid and turn the Flocculation Timer fully. When the Timer is finished wait 2 minutes and turn the timer a second time to the one minute mark. Note: As the flocculation proceeds, the water should become clear. The debris consisting of paint absorbed into the flocculant will collect in the filters during the next step.
- Open the drain valve, located under the cleaning tank to drain and filter the dirty water.
- Clean the tank with the wash gun, wipe off the screen and rails and reinsert them.
- Close the drain valve and ensure that the Air Agitator in the bottom of the tank lies flat.
- Leave the two filters containing the debris in place until the next day to allow for them to dry thoroughly. When the debris is dry, it should have an "oatmeal like" consistency. The debris can now be disposed of according to local environmental regulations.
- If the filtered water is not clean, see the Troubleshooting section.
- The treated water can be reused until it becomes "silky" to the touch and then it should be disposed of according to local environmental regulations. When adding fresh water, refill until the water reaches the bottom of the filter holder.

- Reuse the filters and replace as required.

\* Each scoop = 1 fl oz or 34g of flocculant; 2 kg = about 50-58 scoops.

#### LEFT SIDE (AUTO CLEANING)

The wash water in the left pail will gradually become too dirty to use or flocculate properly. It must be treated at the same time as the water on the right side. Follow these steps:

- To transfer the dirty water to the flocculation reservoir on the right, turn the Transfer Lever (red handle on right side of unit) to the ON position, wait about 2-2 1/2 minutes until the wash pail is empty. Turn the Lever back to the OFF position.
- Follow the flocculation procedure in the previous section. The water drained into the right pail at this time will be combined with the the water already in the pail and the total volume of water will be distributed between the two pails through the "overflow" tube.

## MAINTENANCE

### SCREEN

Inspect the screen in the bottom of the auto cleaning tank and, if there is a build up of paint debris, clean the screen.

---

TROUBLESHOOTING CHART		
SYMPTOM	REASON	CORRECTIVE ACTION
CLEANER DOES NOT FLOW AND PUMP MAKES A PUMPING NOISE	Drain valve closed	Open drain valve (put in vertical position), if not already open. Check wash liquid level. Add liquid if less than 1/2 full.
	Liquid level too low	Check wash liquid level. Add liquid if less than 1/2 full.
	Paint debris in pump	Follow Procedure 1, "Blocked Fluid Passage in Diaphragm Pump"
WASH LIQUID DOES NOT FLOW AND PUMP MAKES A HISSING NOISE	Water in air line causes pump to stall	Follow Procedure 2, "Blockage in Air Passage in Diaphragm Pump"
WASH LIQUID DOES NOT FLOW AND PUMP DOES NOT MAKE A NOISE	Pump leaks	Replace pump
	Blockage in air passage	Follow Procedure 3, "Blocked Passage in Air Line".
PUMP DOES NOT STOP UNLESS TIMER IS TURNED BY HAND OR AIR IS SHUT OFF	Defective Timer	Follow Procedure 1, "Blocked Fluid Passage in Diaphragm Pump"
INSIDE WALL OF TANK IS COATED WITH PAINT EVEN THOUGH OPERATOR MAINTAINS TANK	Cleaner lacks cleaning strength	Replace liquid cleaner.
GUNS NOT CLEAN, PUMP WORKING, LIQUID FLOW NORMAL	Trigger not locked in open position	Use Trigger Clip
	Cleaner or rinse water is dirty	Recycle liquid or replace
FILTERED WATER IS NOT CLEAN (UG7500WF)	Not enough flocculant	Do filtering procedure again. Add 1-2 extra spoonfuls of flocculant.
	Not enough agitation	Ensure that the Agitator is flat on the bottom of the tank and the air pressure to the unit is at least 40 PSI. Do filtering procedure again including adding flocculant.
	Filter needs to be replaced	Replace filter.
FILTERED WATER HAS A "SILKY" FEEL (UG7500WF)	Filtered water has been used too often	Dispose of filtered water.
	Too much flocculant has been added	Reduce the amount of flocculant added next time.

## TROUBLESHOOTING PROCEDURES

### PROCEDURE 1

#### Blocked Fluid Passage In Diaphragm Pump

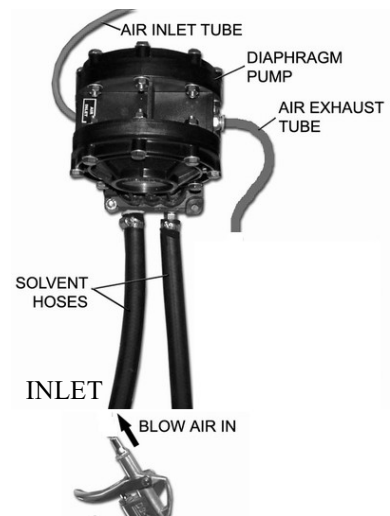
If the pump sounds like it is working but liquid does not flow, clear the fluid passage as follows:

- Remove suction tube from the pail and blow air at 85 PSI into the INLET Liquid Hose (see diagram). Step on foot pedal to activate pump. This procedure may have to be repeated several times. If this procedure does not help, blow some water into the suction hose using a spray gun, wait one minute and step on foot pedal to activate pump. This procedure may have to be repeated several times. If this procedure does not work, the pump must be replaced.

If you need to replace the pump call your local dealer.

The warranty on the diaphragm pump is two years from date of purchase.

This procedure will also clear a blockage in the fluid line for the brush. Follow the same procedure to clear a blockage in the automatic nozzle except turn the timer instead of stepping on the foot pedal.

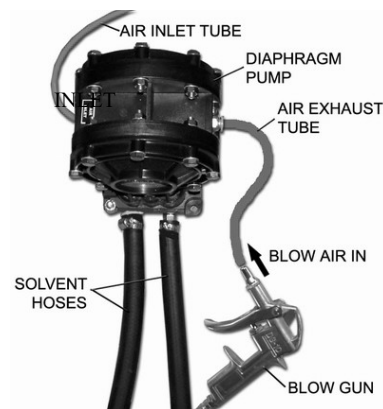


### PROCEDURE 2

#### Blocked Air Passage In Diaphragm Pump

If there is a steady hissing sound and the pump is not cycling, the spool valve has stalled due to a blocked air passage. Follow the procedure below to clear the blockage.

- Connect a blow gun to an 85 PSI source. Locate the blue hose that extends from the air exhaust port of the diaphragm pump. Use a blow gun to blow air into the open end of this hose. Turn timer. If the procedure is successful, the pump will start working. The procedure may have to be repeated several times. If this procedure does not work, replace the pump.
- Cause: Contaminants in the air supply (water, oil, solid particles etc)
- Preventative Action: If necessary, install an Airline (Moisture) Filter.



### PROCEDURE 3

#### Blocked Passage in Air Line

The components in the air line are the diaphragm pump, air valve, foot pedal, 3-way ball valve and regulator. See the Flow Diagram and the section: Replacement Parts.

To troubleshoot a component:

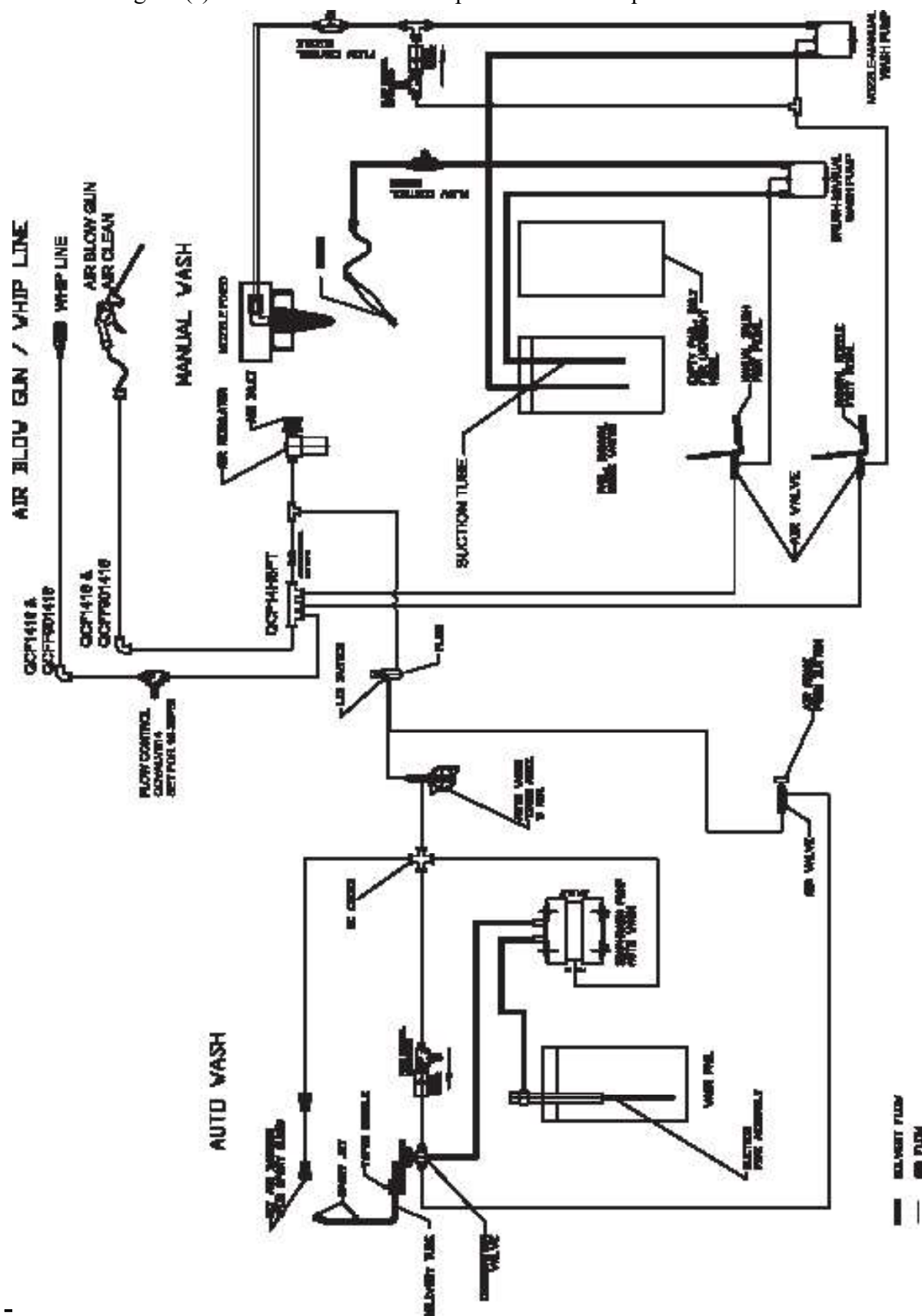
- 1) Disconnect the air line to the component using the quick disconnect.
- 2) Step on foot pedal and check for presence of positive air pressure in the air line. If there is ample positive air pressure, replace the component.

If air pressure is absent, there is a faulty component upstream. Reconnect the air line and check the operation of the next component upstream by following steps 1 and 2 above.



FLOW DIAGRAM - UG7500W

Use the diagram(s) to trace the flow of compressed air and liquid.

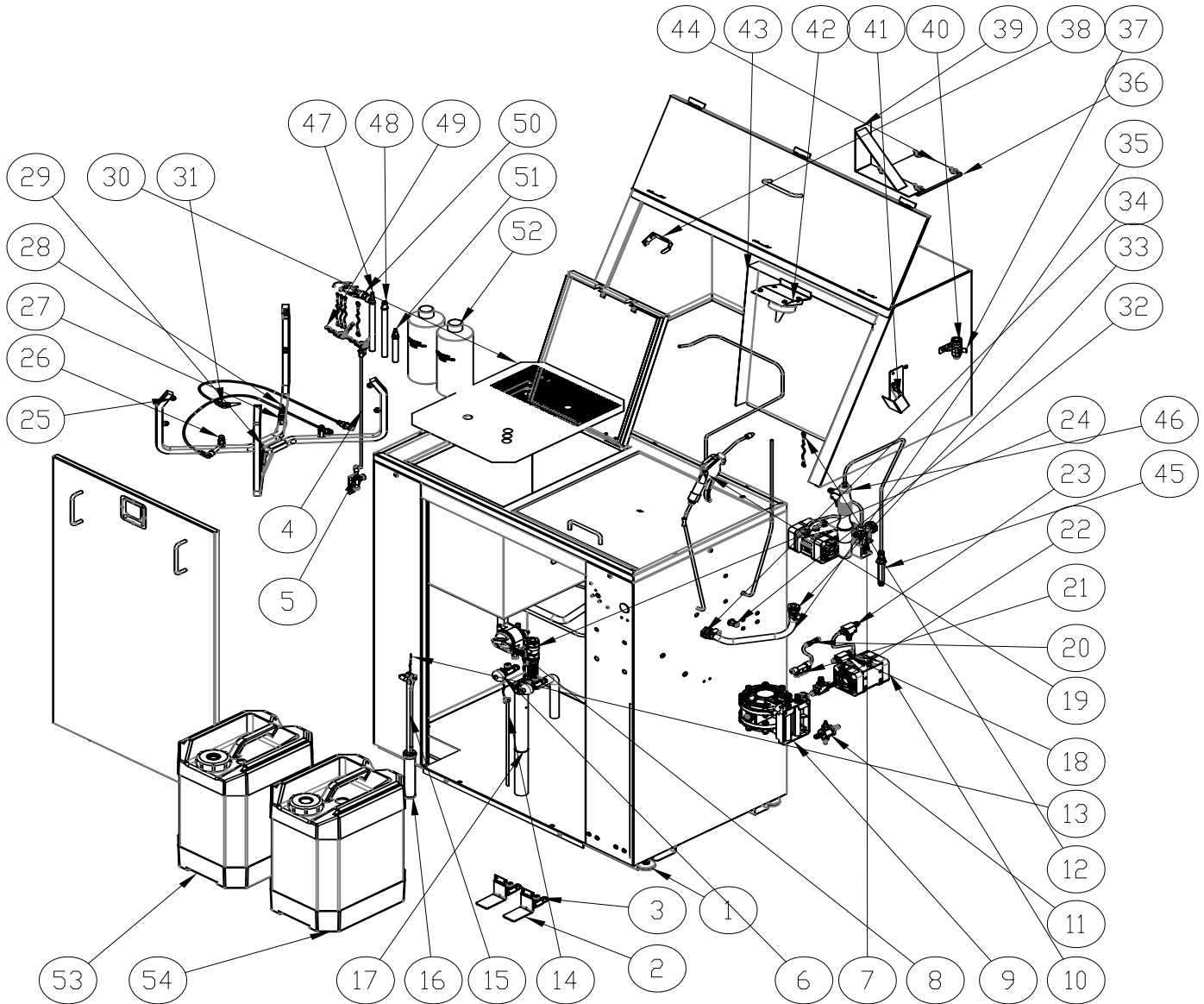


**REPLACEMENT PARTS AND STRUCTURE**

MODEL SHOWN IS A UG7500WF - SOME PARTS MAY NOT APPLY TO YOUR MODEL



Note: For additional replacement parts, see the list of included parts on page 3.





UG7500W SERVICE PARTS

## UG7500W SERVICE PARTS

ITEM	PartNo	DESCRIPTION	QTY
1	110-531L	ADJUSTABLE FOOT	4
2	780-7510F	FOOT PEDAL,WELDMENT	2
3	115-400	RINSE VALVE ASSY, 2-WAY	4
4	100-821F	PUSH ROD, SS, LID SWITCH	1
5	113-800	LID SWITCH ASSY, FOR MODELS W/O VENT	1
6	140-731F	PUSH BUTTOM, RINSE	2
7	KIT-PR	AIR PRESSURE REGULATOR, SET TO 85 PSI	1
8	115-200K	MECH. MANUAL TIMER KIT, 5 MINS.	1
9	UDP4-TA	DUAL DIAPHRAGM PUMP, 4"	1
10	UDP2TAB	2"DIA-PUMP, TEFLON BALL	2
11	140-400F	COMBINATION VALVE ASSY	1
12	100-835-6	GROUND WIRE ASSY, 18GA	1
13	100-8330	GROUND WIRE, GREEN, 14 AWG, 4 FT	3
14	103-8350	SUCTION TUBE WELDED WITH NUT	1
15	120-4210TDM	SUCTION TUBE ASSY	1
16	104-4206	FILTER W/FITTING SUB-ASSY	1
17	URP100S	RINSE PUMP,100CC	1
18	102-3950A	AIR FLOW CONTROL ASSEMBLY,6MM TUBE	1
19	102-7010	AIR BLOW GUN ASSY	1
20	102-3561	AIR RESTRICTOR SUB-ASSY, 60PSI	1
21	QCF14H5PT	Push-to-Connect 1/4" OD TUBE, 5 PORTS	1
22	780-3940	AIR FLOW CONTROL W/CHECK VALVE, SET TO 85 PSI	1
23	150-3780	LIQUID FLOW CONTROL ASSEMBLY, 6MM TUBE	2
24	140-480	DRAIN VALVE WITH FITTINGS AND HOSE	1
25	100-350N	SPRAY JET ASSY. BRASS	8
26	100-370	SPRAY JET + EXTENSION	2
27	100-350L	SPARY JET ASSY	4
28	110-356	GUN CLEANER NOZZLE,BRASS	1
29	780-3530	NOZZLE, 3M PPS ADAPTOR	1
30	100-332N	FLAME RETARDING SCREEN	1
31	140-230	AIR PURGE KIT, SPRAY GUN	2
32	QCF1418L	QUICK CONNECTOR 1/4"OD TUBE X 1/8" NPT	2
33	780-3340	FITTING SET UNDER THE WASH PAN	1
34	780-3440	FITTING SET ON WASH SINK SIDE WALL	1
35	780-8131	PE TUBE, 1/2" ID X 5/8" OD X 12" LG	1
36	36-023S	VENT TUBE PLUG PLATE	1
37	102-3022F	BRUSH HOLDER	2

UG7500W SERVICE PARTS  
CONTINUED

38	780-3370	LID HOLDER	1
39	780-3730	HOOD DOOR SUPPORT	1
40	102-3990	QUICK COUPLER, 1/4" BODY, WITH 6MM QC	1
41	102-3028	BRACKET GUN HOLDER,	1
42	103-3560	NOZZLE ASSEMBLY, WATER BORNE	1
43	780-3740	BACK SPLASH PLATE	1
44	36-034	GASKET 6" SQ, VENT HOLE PLUG	1
45	780-2730	FITTING SET FOR MANUAL BRUSH, UG7500	1
46	144-390S	MANUAL BRUSH FOR SOLVENT	1
47	110-430	TAPER NOZZLE ADAPTER	1
48	110-430PPS	NOZZLE ADAPTER FOR PPS	1
49	100-413F	CUP HOLDER	2
50	140-2341	KIT-PLUG FOR GUN	2
51	110-430PPS2	UNIVERSAL NOZZLE ADAPTER	1
52	102-8200	AQUA-KLEEN PAINT GUN CLEANER, 946 ML	2
53	150-8115SKS	SOLVENT WASH PAIL, HDPE, RECTANGULAR	1
54	150-8114RT	PINSE PAIL, HDPE RECTANGULAR	1

		(No. DC23304)
<b>EU DECLARATION OF CONFORMITY</b>		
Equipment Type: Spray Gun Cleaning Systems - Model UG7500W SERIES		
Manufacturer: Uni-ram Corporation		
Address: 381 Bentley Street, Markham, Ontario L3R 9T2, Canada		
This declaration of conformity is issued under the sole responsibility of the manufacturer		
The object of the declaration described above is in conformity with the relevant Union harmonisation legislation:	The following harmonised standards and other technical specifications were used in support of this declaration:	
ATEX Directive 2014/34/EU	EN ISO 80079-36:2016 EN ISO 80079-37:2016	
Notified body TÜV SÜD (number 0123) issued certificate according to Article 13(1) b) ii) of ATEX directive 2014/34/EU for equipment and protective systems intended for use in potentially explosive atmospheres (ATEX). Certificate No: EX9A 18 02 78342 002 and EX9A 078342 0003 Rev.00		
Provisions of the ATEX directive fulfilled by the equipment:	Nonelectrical devices and components Group II Category 2 Ex II 2 G Ex h IIB T4 Gb	
Declaration Reference: EX9A 18 02 78342 002 and EX9A 078342 0003 Rev.00; Risk Analysis HAR1401; HAR2001		
Signed for and on behalf of: (manufacturer) Uni-ram Corporation		
David Hilborn President (signature):		(place and date of issue): Markham, Ontario, Canada 24 Mar 2023

rev.A

## Full Product Warranty

These Uni-ram products have been engineered and manufactured to high performance standards. Each unit has been subjected to detailed factory testing before shipment.

This product comes with a one-year full warranty from the date of purchase. Uni-ram Corporation reserves the right to repair or replace the unit, free of charge, to the original purchaser if a part is found to be defective in material or workmanship as determined by factory service personnel. The items listed below under "Conditions of Warranty" as consumables are not covered.

Uni-ram reserves the right to direct the customer to ship the unit collect to the Uni-ram factory or to an approved Service Center for repair using the Uni-ram Return Goods Procedure or to repair the unit on-site. To prevent damage in transport, the purchaser must ship the unit in the original packaging or use alternate adequate packaging. All units must be shipped clean and free of liquid.

### Diaphragm Pump:

We are pleased to advise that the warranty on the diaphragm pump, the heart of the spray gun cleaner, comes with a 2 year replacement warranty. If, in the unlikely event your diaphragm pump fails during the first two years of service, call Uni-ram Service at 1-800-417-9133. We will send you a new pump free of charge and arrange for the return of your original pump.

### Conditions of Warranty:

As Uni-ram Corporation has no control over the working conditions or circumstances under which the purchaser stores, handles or uses the product, Uni-ram makes no warranty or claim, either expressed or implied with respect to this product's fitness for any purpose or the result to be obtained from its use. This condition applies to the sale of all products and no representative or distributor of Uni-ram Corporation has the authority to waive or change these conditions.

This warranty applies only to the original purchaser and does not apply if the unit has been misused, overloaded, neglected, altered or used for any purpose other than those specified in the operating and installation instructions. Deterioration due to normal wear is not covered by this warranty. Damage due to accident, transportation, fire, floods or acts of God is also not covered. Units whose serial numbers have been altered or removed are not covered. The warranty is invalid if unauthorized chemicals as noted in the manual or liquids with acid content are used in this unit. Unauthorized attempts at self-repair or alterations by the owner also invalidate this warranty. Interior or exterior finishes are not covered by this warranty.

Consumable Items are not covered by this warranty (eg: gaskets, screens, bags, filters, nozzles and air jets).

This warranty replaces all other warranties expressed or implied by statute or otherwise.

To make a claim, call Uni-ram Service at 1-800-417-9133 and quote the serial number of the unit.

---