

Fuji Dual Diaphragm Pump

MODEL UDP4TA



Uni-ram Corporation - 381 Bentley Street, Markham, Ontario L3R 9T2 Canada

Telephone: 905-477-5911 Fax: 905-477-8922

REV. JUN11/02

FUJI DOUBLE DIAPHRAGM PUMP MODEL UDP4TA

This pump has been developed as a compact yet powerful air operated pump for industrial and commercial applications.

Technical Specification

Name and Model:	Fuji Dual Diaphragm Pump Model UDP4TA
Compatibility:	Most of common solvents and aqueous solvents.
Construction:	Reinforced Delrin Body, 4" O.D. Teflon Diaphragm, Stainless Steel internal Parts, Anodized Aluminum Valve Body and Spool.
Operating Pressure:	Compressed Air 20 to 85 psi (1.4 to 6 kg/cm ²)
Maximum Air Pressure:	100 psi (9 kg/cm ²)
Air Consumption:	2 cfm (58 liter/minute)
Output:	2.6US Gallons (10 Liters) per minute at 75 psi (5.1 Kg/cm ²)
Priming Vacuum:	7" (175mm) Hg at 75 psi (5.1 Kg/cm ²)
Suction Vacuum:	27" (685mm) Hg at 75 psi (5.1 Kg/cm ²)
Air Inlet:	Quick Connect Fitting for 1/4"ØO.D. (6.35 mm Ø O.D.) hose
Exhaust:	1/4" Ø O.D. Silencer Tube, Maintenance Free
Liquid Inlet:	Hose Barb: 3/8" Ø O.D. (9.5 mm Ø O.D.)
Liquid Outlet:	Hose Barb: 3/8" Ø O.D. (9.5 mm Ø O.D.)
Inlet/Outlet Valves:	Teflon Balls and Stainless Steel Valve Springs
Net Size and Weight:	5.5"L x 4.9"W x 6.5"H (14 cm. L x 12.5 cm. W x 16.5 cm. H), 3 lbs. (1.4 kg)
Mounting:	4 Mounting Holes in Base Plate

Caution: For liquid containing small solid particles, mount the pump with Diaphragms in horizontal position. Do not apply air pressure in excess of 100 psi (9 kg/cm²)

Note: Use of properly lubricated air will minimize wear of moving parts and prolong service life.
Air Filter and Pressure Regulator must be installed in line to ensure the quality of air supply.

Service

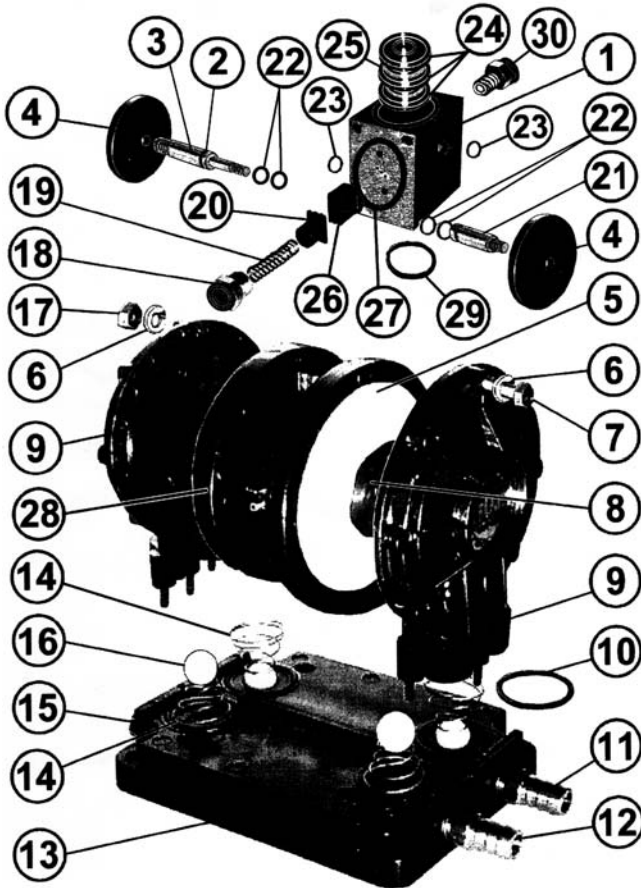
Pump may stop working when excessive amount of water, oil, or other liquid is introduced into the pump by air supply. In most such cases, the pump may be reactivated by the following procedures.

Using air Blow Gun, blow air of about 70 psi (5 kg/cm²) into Air inlet Hose Barb (Item No.18) and the end of Exhaust Silencer Tube (#18) alternatively to blow out the water, oil, etc. as much as possible. If the pump does not start, the pump must be repaired or replaced.

CAUTION: TO AVOID THE DAMAGE TO THE PUMP, DO NOT SUPPLY AIR PRESSURE HIGHER THAN 100PSI (7 Kg/cm²).

Parts and Location

The parts and their location are shown in the illustration and the parts list shown below:



ITEM NO.	PART NO.	DESCRIPTION	Q'TY /UNIT
1	DP120-131	VALVE BODY, UDP4-TA PUMP	1
2	ZD008VT	O-RING, SHAFT SEAL, VITON	2
3	DP120-107	SHAFT #1, LONG, #1	2
4	DP120-119	DISC HOLDER	2
5	DP120-123	DIAPHRAGM, TEFLON, 4"OD	2
6	DP120-128	WASHER, 250"ID, UDP4-TA	44
7	DP120-125	ROUND BOLT, M6X40*PM	16
8	DP120-117	HEX DISC HOLDER	2
9	DP120-103	PUMP HOUSING	2
10	ZD020N	O-RING, DIA-PUMP, NEOPRENE	4
11	Z9125-6A	INLET HOSE BARB, 3/8"H-1/8"MP, BR	1
12	Z9125-6A	OUTLET HOSE BARB, 3/8"H-1/8"MP, BR	1
13	DP120-101	BASE PLATE	1
14	DP120-149	SPRING, CHECK VALVE, UDP4TA	4
15	Z121-A	HEX PLUG, 1/8"MPT, BRASS*GC	2
16	111-758	VALVE BALL, 7/16"OD TEFLON	4
17	DP120-127	HEX NUT, M6*PM, UPD4-TA	22
18	QCF1418	QC FITTING, AIR INLET	1
19	DP120-145	SPRING, LOCKING PISTON	1
20	DP120-113	LOCKING PISTON	1
21	DP120-109	SHAFT, SHORT, #2	1
22	ZD008VT	O-RING, SHAFT CUSHION, VITON	4
23	ZD107	O-RING, VALVE BODY, AIR PASSAGE	2
24	ZD113VT	O-RING, SPOOL, VALVE BODY, SIDE	4
25	DP120-133	SPOOL, VALVE, UDP-4TA	1
26	DP120-111	SWITCH VALVE	1
27	ZD022	O-RING, CENTER BODY, SWITCH VALVE	1
28	DP120-105	CENTER BODY	1
29	ZD024	O-RING, VALVE BODY, SIDE, BUNA	2
30	QCF1418	QC FITTING, EXHAUST	1

Warranty

Uni-Ram Corporation warranty this product for twenty four (24) months from purchase date to be free from defects in materials and workmanship. Uni-Ram Corporation will replace, free of charge, to the original purchaser, any defective product or it's component part returned to Uni-ram for inspection.